

Getting started with MosaicViewer

(for Windows)

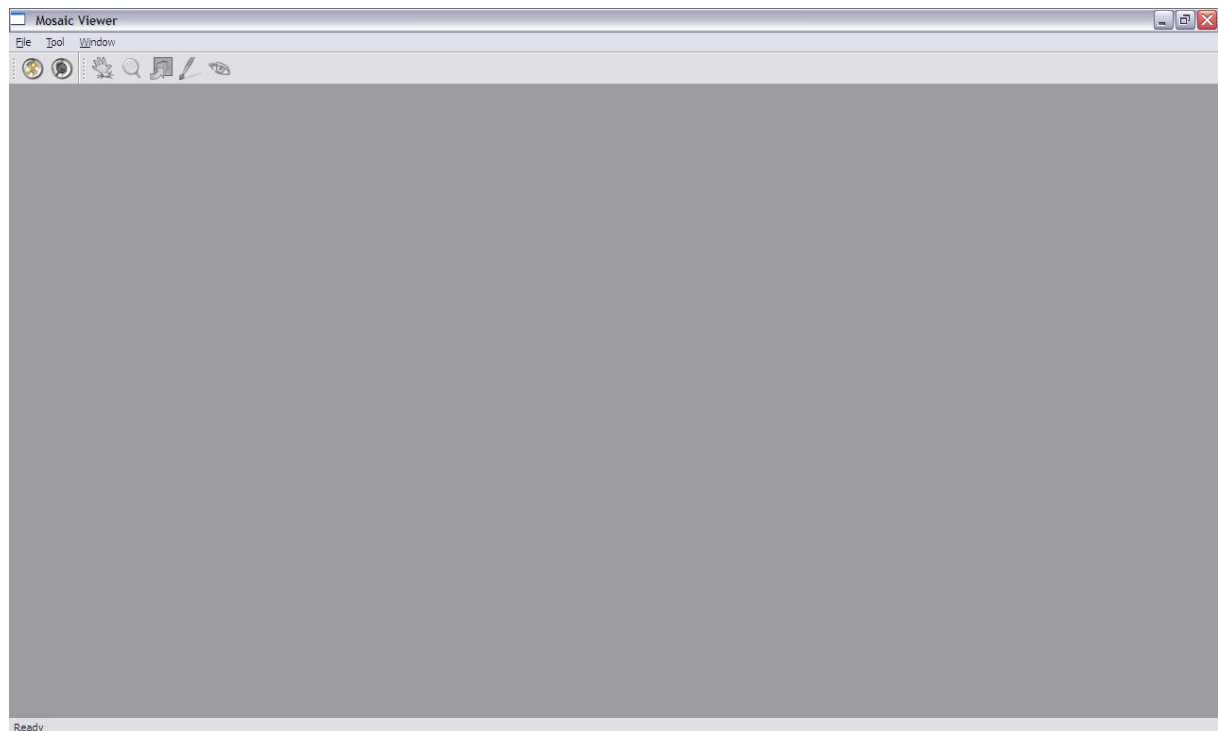
MosaicViewer does not require any installation in your system.

You can download a [zip](#) or [rar](#) file from the webpage:



<http://eia.udg.es/~rafa/mosaicviewer.html>

Once the file has been downloaded, uncompress it with winRAR or winZIP, and double click on the file named [MosaicViewer.exe](#).

Once you run it, the following window will appear:




MosaicViewer allows:

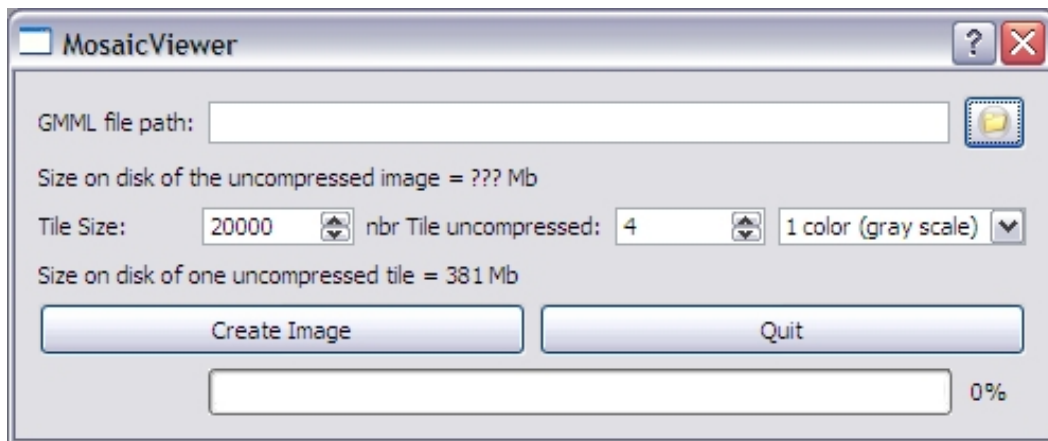
1.  To build a mosaic from a GML (General Mosaic Markup Language) file.
2.  To load a mosaic previously built.
3. To navigate, annotate, etc. the mosaic.

1. Building a mosaic from a GML.

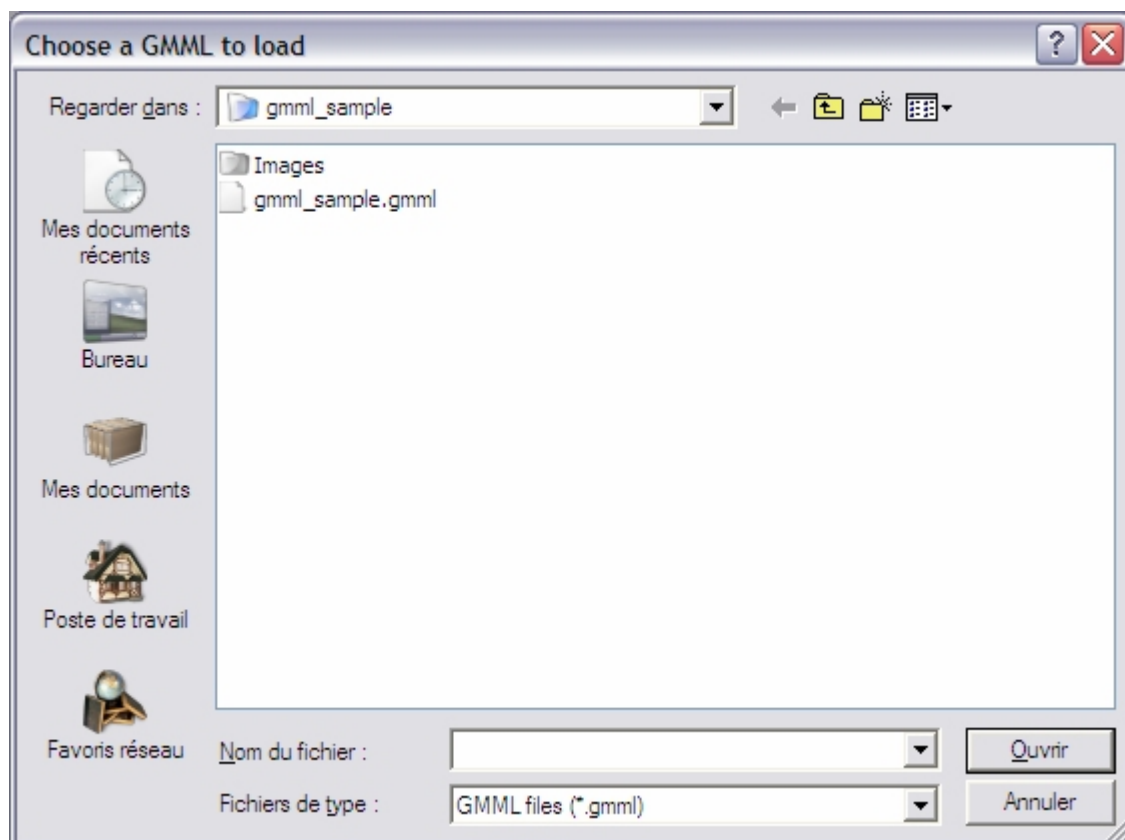
1.1 To test this option, you can download from the web page of MosaicViewer the file [gmml_sample.rar](#), and uncompress it with WinRAR.

1.2 In MosaicViewer, click on the  button (or select the menu option [File](#) -> [New Mosaic](#)).

1.3 The following window will appear:




1.4 Click on the  button to provide the GMML file path. The following window will appear



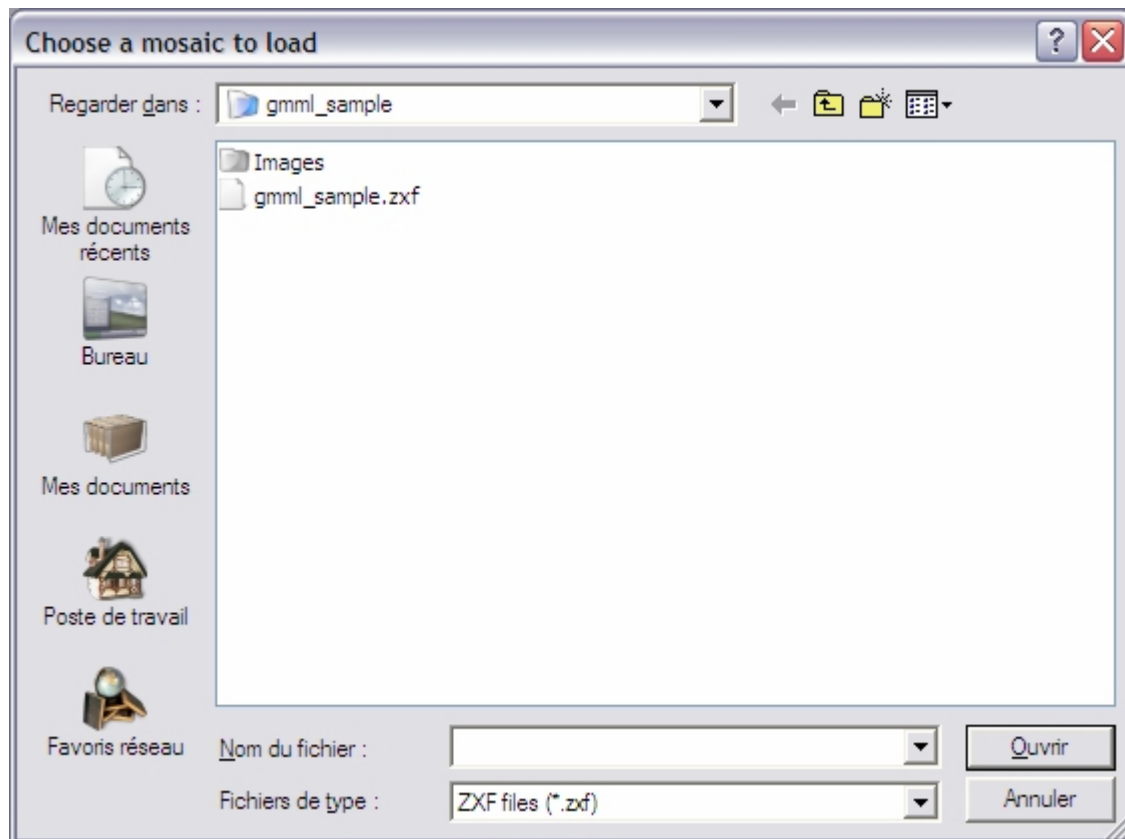
1.5 Select the file [gmml_sample.gmml](#) and click in the [Create Image](#) button. In this way, the file [gmml_sample.zxf](#) will be created in the same folder where the GMML file was stored. Two TIF files will also be created in this folder.

1.6 Now we are ready to load the mosaic, as described in the following step.

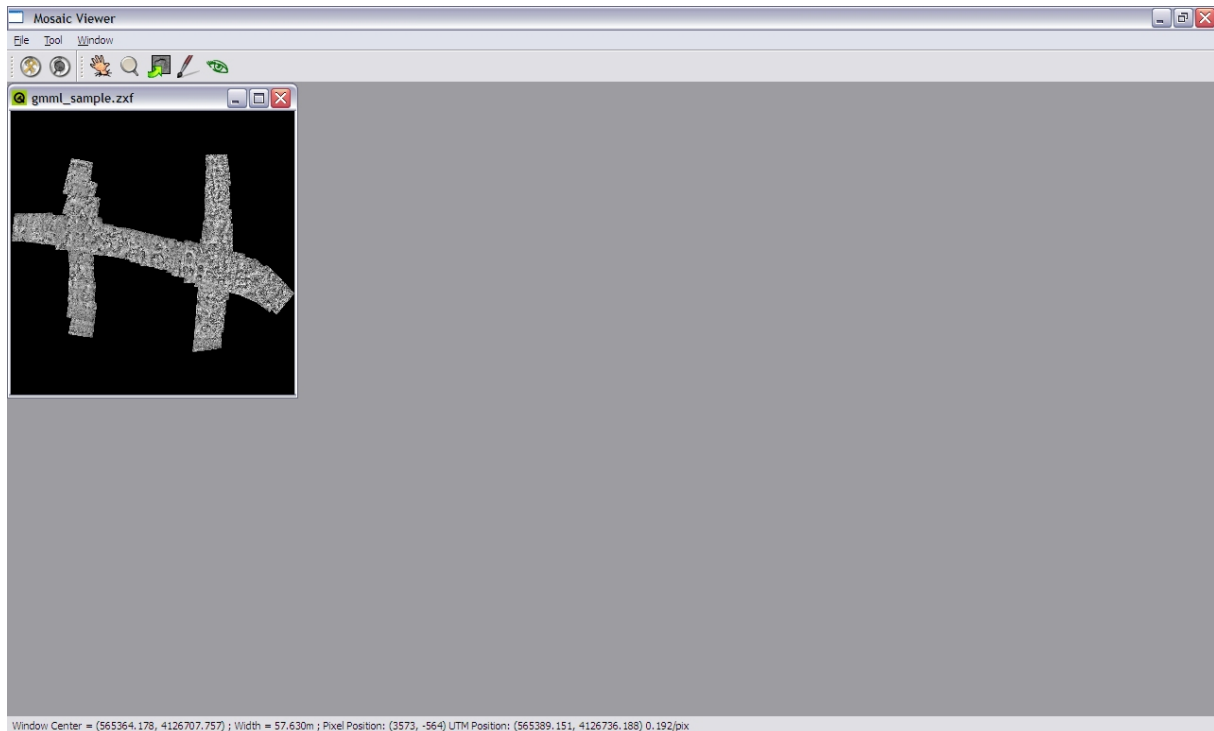
2. Loading a previously built mosaic.

2.1 Click on the  button to load the mosaic that you have just created.

2.2 The following window will appear



2.3 Select file [gmm1_sample.zxf](#) as the mosaic to open.



2.4 Now you have already loaded a mosaic, and you can navigate through it.

3. Navigate and annotate the mosaic.



This option allows panning and zooming the mosaic:

- Left click, hold and move: pan the mosaic.
- Wheel: zoom in and out at the position of the cursor.
- Right click: zoom the mosaic to fit in full screen



This option allows zooming the mosaic (if you mouse has a wheel, you have no need for this option):

- Left click: zoom in at the position of the cursor.
- Wheel: zoom in and out at the position of the cursor.
- Right click: zoom out at the position of the cursor.



This option shows the tool allowing to export a selected part of the mosaic:

- Click in the [Select an Area](#) button and select an area of the mosaic. Or alternatively, click in the [Select Window](#) button to select the whole window.
- The [Zoom on the Area](#) button is used to zoom the selected area.
- Check or uncheck the checkbox depending if you want to create a world file (file containing the UTM position of the top left corner of the area and it's resolution)
- Select the percentage of zoom. The final size of the exported image is reported.
- Click on the [Save](#) button to save the image in PNG.

- The [Reset](#) button removes the selected area



This option shows the tool allowing to annotate the mosaic (*this tool is under development*):

- The buttons [Mark point](#) and [Mark line](#) are used to annotate the mosaic with points and lines, respectively. In order to terminate a line, a double click at the last point of the line should be performed.
- The buttons [Delete point](#) and [Delete line](#) are used to remove a point or a line respectively.
- The buttons [Save ...](#) and [Load ...](#) allow saving and loading points and lines in a text file.
- The **Name** and the **Color** of the points and the lines and the **Shape** of the points can be edited.



This option shows the tool allowing tracing the images of the mosaic. This means that once a mosaic has been loaded, you can place one of the images of the mosaic on top of it, simulating a “use-last image” rendering. This is very useful when the alignment of the mosaic is not good. Using this tool you can see the individual images located at their corresponding position of the mosaic.

- You should specify the GMML path and the source directory of the images used in the GMML.
- By clicking on the [Select Point or Rectangle](#) button, you can find all the images of the mosaic containing the selected point or all the images that have their center in the selected rectangle.
- When selecting an image in the list, this one is shown on top of the mosaic.
- You can show the border of all the images of the list by checking the checkbox [Show Border](#).
- You can show the border of the selected image (in red) and all its edges (in blue) by checking the checkbox [Show Edges](#).